

Hardware

- [Debug-UART](#)
- power-on: hold power-switch 10 seconds, without power-switch: [Forum](#)
 - solder bridge next to power switch. Can cause problems since poweroff-feature. To fix this blacklist pmic-keys-module or uninstall acpid package see [issue 35](#)
 - input 5V to OTG
- poweroff (4.14.53+) needs acpid package for power-button (command works without it)
 - <http://forum.banana-pi.org/t/bpi-r2-already-has-an-on-board-rtc/5347/31>
- emmc: [Forum](#)
- wifi-chip onBoard: MT6625 [Forum \(dev\)](#) [Forum \(usr\)](#)
- Switch-Chip onBoard: MT7530 [Forum](#)
- [GPIO](#)



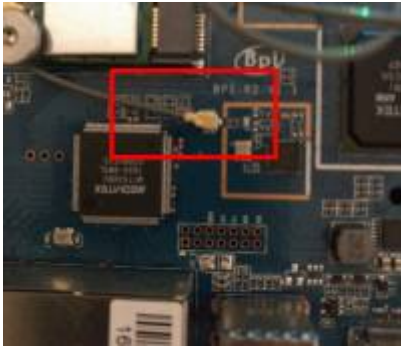
additional hardware

- Power-supply: 12V/2A recommended, plug coaxial: 2,1 x 5,5 mm [Reichelt](#)
- microSD-card (>=8GB): Sandisk Ultra 32GB
- WLAN-antennas: 5dBi mit rp-SMA auf IPEX/u-FL Kabel
- PCIe wifi-card: [Forum](#) ⇒ [MT76](#)
- case:
 - official: [alu-case](#), [acrylic case](#)
 - unofficial [files for 3D Printer](#)
- heatsinks:
 - mt7623: 20x20mm
 - mt7530: 14x14mm (like rpi soc)

cables

wifi

- rp-SMA to IPEX/u-FL cable for wifi-antennas



SATA

- [2,54mm XH 2pin/4pin](#) for SATA power or [2-Pin combined with SATA](#)



it works with GND next to power (1+2,3+4). 12V is yellow, 5V is red

both jacks near sata-connector have voltage, also if R2 is "halted", the fan-jack (near IR-receiver) had no direct-current output in my tests (4.14), this seems my gnd there is broken...with another gnd i have the 5V output

battery

- ~~1,25mm SH 6pin for battery~~ [AliExpress](#), no circuit known battery-connector does not work [see here](#)

mount

- wifi mPCIe-card bolted with M2x10 screws and knurled nut + 2 x washers of Polyamid (isolation+protection of the board)

From:
<http://www.fw-web.de/dokuwiki/> - **FW-WEB -Wiki**

Permanent link:
<http://www.fw-web.de/dokuwiki/doku.php?id=en:bpi-r2:hardware>

Last update: **2020/08/29 17:14**

